

Microsoft

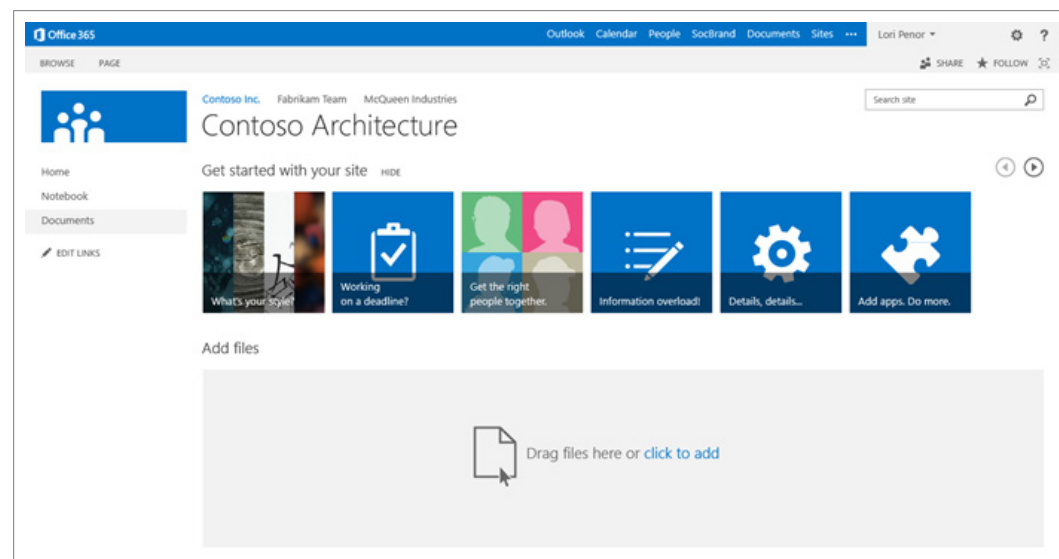
SharePoint Server 2013

IT Professional Reviewer's Guide

Table of Contents

SharePoint Server 2013	4	Secure Delegation	14
Why SharePoint Server 2013?	5	Site Closure and Deletion	14
Manage Cost.....	5	iFrame Security	14
Manage Risk.....	5	Reliable	15
Manage Your Time	5	Request Management	15
Manage Cost	6	System Status Notifications	15
Flexible	7	Developer Dashboard.....	16
Deployment Flexibility.....	7	SQL Server 2012.....	16
Virtualization	7	Windows Server 2012	16
Cloud-based Applications.....	7	Manage Your Time.....	17
Multitenancy and Cross-premises Integration.....	7	Cost-Effective	18
Service Applications.....	8	Deferred Upgrade.....	18
Translation Services	8	Site Collection Health Checks	18
App Management	8	Selective Provisioning	19
Work Management.....	8	Windows PowerShell.....	19
PowerPoint Automation Service.....	8	Central Administration.....	19
Office Web Apps	9	SharePoint Online	20
User Profile Service.....	9	Efficient	21
Scalable	10	Multiple Screens	21
Scalable Architecture.....	10	Mobile	21
Distributed Cache	10	Open Data Protocol.....	21
Disk I/O.....	10	Business Connectivity Services.....	22
Shredded Storage.....	10	Search	22
Minimal Download.....	11	Business Intelligence	23
Data Platform.....	11	Business Intelligence Center	23
Social Computing.....	11	Excel Services	24
Manage Risk.....	12	PerformancePoint Services	24
Secure	13	Conclusion.....	25
Information Management.....	13	Resources	25
Electronic Discovery	13		
Rights Management.....	13		

SharePoint Server 2013



[Start page for SharePoint Server 2013 team site](#)

Welcome to Microsoft® SharePoint Server® 2013. Reimagined to focus on users, SharePoint Server 2013 has a new, fluid design that shows perfectly across screens—whether with touch-enabled slates and phones, laptops, or desktops. Beautiful and fast, familiar yet intuitive, SharePoint Server 2013 gives you instant access to people, applications, and content. You'll spend less time searching for information and more time working with it.

Browse the SharePoint Marketplace or Internal App Directory to find solutions that can help you work efficiently and share information easily. SharePoint Server 2013 helps you get things done—more quickly, securely, and cost effectively.

In today's volatile economic climate, organizations require collaboration, communication, and productivity solutions to be both cost-effective and flexible. SharePoint Server 2013 can help you achieve new levels of reliability and performance, delivering features and capabilities that simplify administration, protect communications and information, and empower users while meeting their demands for greater business mobility.

SharePoint Server is a preferred choice among organizations to enable rich, seamless, and productive collaboration. SharePoint Server 2013 builds on the investments of previous SharePoint releases to:

- Lower IT costs with a flexible and scalable collaboration platform.
- Better manage risk by safeguarding your business with secure and reliable capabilities.
- Increase productivity through cost-effective and efficient management.

Why SharePoint Server 2013?

Manage Cost

Pressure to optimize your IT infrastructure for ever-changing business conditions requires you to be agile, and that means investing in solutions that provide reliability and choice. SharePoint Server 2013 provides the flexibility to tailor deployment based on your unique business needs.

SharePoint Server 2013 provides scalability, reliability, and security while allowing you to take advantage of the latest hardware innovations and computing technologies—making it capable of handling enormous amounts of data faster, more efficiently, and at a lower cost.

Manage Risk

Complying with regulatory standards and preventing unauthorized access to business-critical and personal data is a continual priority for organizations and corporate IT. A key pillar for complying with regulations and preventing unauthorized access is the ability to:

- Exercise fine control over who has access to information.
- Monitor and report who actually accessed and modified critical information.

SharePoint Server 2013 provides a broad range of features and capabilities designed to automate the assignment of compliance policies.

Manage Your Time

With IT facing exponential growth in service requests, users need to be able to do more with less dependency on their IT departments. In many cases, users consider IT a bottleneck to productivity, but from an IT perspective, it is increasingly difficult to keep up with emerging user demands while also maintaining compliance and availability.

SharePoint Server 2013 supports users through intuitive tools and solutions that enable them to choose how and when they upgrade and that provide programmatic access to centrally managed compliance policies. These tools and solutions help to ensure consistency and open collaboration, while allowing IT to focus on innovation.

This guide walks you through new features and capabilities that address these challenges.

Manage Cost

Application architectures continue to evolve, and SharePoint Server 2013 has been designed to take advantage of hardware trends and technological advances that enable applications to harness inexpensive commodity hardware. This means that you can scale effectively and efficiently. Improvements in performance and scale provide support for demanding workloads, and a combination of powerful features and capabilities balance the needs of users with those of IT.

When it comes to IT infrastructure, the message is clear: Organizations want a more consistent, integrated approach that helps them solve fundamental business and IT challenges. They also want to take advantage of new applications and services that can be deployed on-premises and in private and public cloud environments. SharePoint Server 2013 is a more dynamic, available, and cost-effective server platform that allows organizations of all types and sizes to optimize their IT and respond rapidly to market changes.

Flexible

SharePoint Server 2013 has been designed, developed, and tested with the Microsoft Software as a Service (SaaS) strategy at its core. Drawing extensively from that experience, SharePoint Server 2013 offers you new and improved, highly flexible deployment options. You can choose from a traditional on-premises deployment, a hosted service with Microsoft Office 365 sites powered by Microsoft SharePoint Online, deployment in Azure Infrastructure as a Service (IaaS), or a mix of these options. Microsoft is committed to SaaS, empowering you to choose how and when you take advantage of on-premises or cloud-based solutions, all without changing the user experience.

Maximize administrator
choice while improving
business outcomes.

Deployment Flexibility

SharePoint Server 2013 provides unprecedented deployment flexibility, whether you're looking to deploy on-premises, in the cloud, or in a hybrid scenario. As business needs and technological advancements converge, IT professionals have a unique opportunity to take advantage of new innovations in their organizations.

For example, IT professionals need an infrastructure that scales up and down quickly to meet changing business needs, minimize downtime and failures, and maximize cost efficiencies. Fortunately, several key innovations are making that possible:

Virtualization

IT departments can respond more quickly to requests from business units, reducing the time it takes to deploy infrastructure and services. Plus, as always, virtualization significantly reduces the number of physical servers required to support the business.

Cloud-based Applications

Anywhere access to critical applications can help to enhance work productivity, improve communication, and increase customer touch, allowing organizations to improve their regular business rhythm and respond to market changes and opportunities.

Multitenancy and Cross-premises Integration

These innovations help IT departments and hosting service providers maximize existing infrastructure investments while exploring new services, improved management, and higher availability.

Service Applications

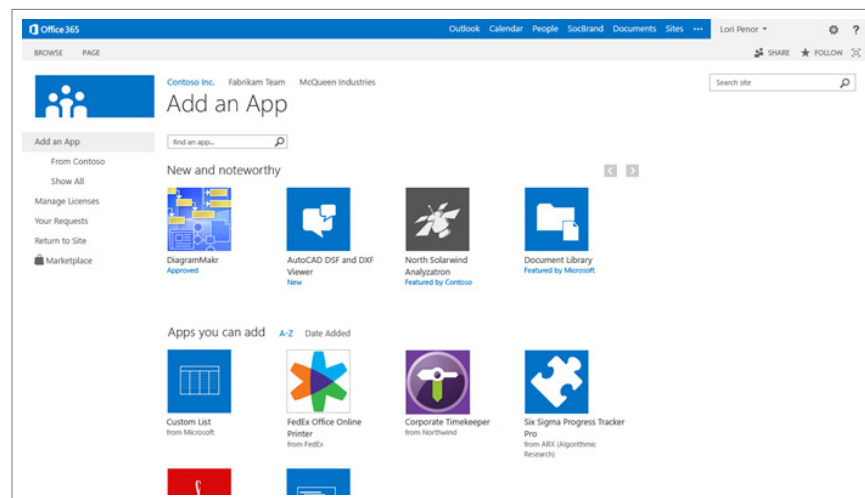
While SharePoint Server 2013 provides a service application architecture consistent with SharePoint Server 2010, its new services are designed to maximize your investment and make information available to more people, in more formats, with more efficiency.

Translation Services

You can reach more people with new cloud-based translation services capable of translating not only sites, but also their content. These services have a comprehensive set of APIs, REST, and CSOM support, so content can be pretranslated when needed, or translated on the fly by users—asynchronously, synchronously, or streaming.

App Management

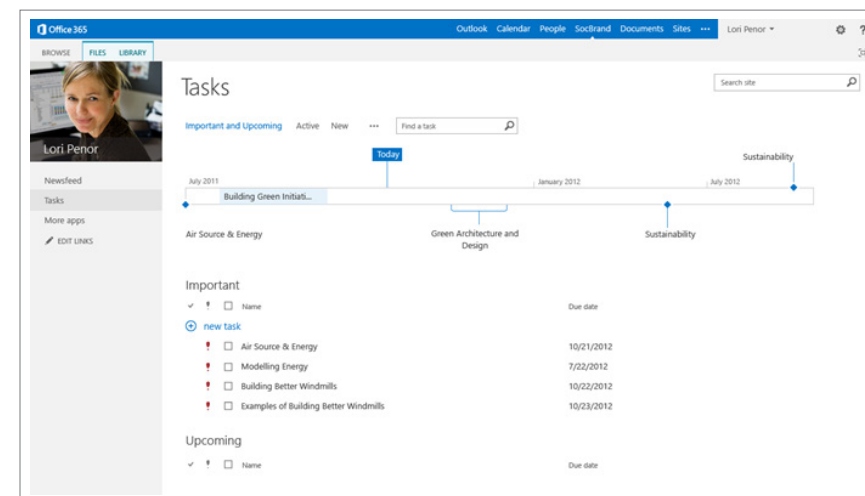
Applications are core to the SharePoint Server 2013 experience. A SharePoint application is a secure, focused solution that is easy to develop, deploy to a marketplace, monitor, and retire. Moreover, managing applications should be easy. SharePoint Server 2013 includes a new App Management Service designed to take the guesswork out of managing applications, permissions, and licensing, whether installed from the SharePoint Marketplace or Internal App Directory.



Apps in SharePoint Server 2013

Work Management

Software should work together. With SharePoint Server 2013, you can gain a 360-degree view of workplace activities and improve communication across your organization through connected systems. A new Work Management Service provides support for action-based event aggregation across Microsoft server products, including Microsoft Exchange Server, Lync® Server, Project Server, and SharePoint Server 2013. For example, users can edit tasks from Microsoft Exchange Server on a mobile phone, and the Work Management Service aggregates tasks from Exchange Server in the My Tasks SharePoint list.



Tasks in SharePoint Server 2013

PowerPoint Automation Service

Information is at the core of SharePoint Server, and making that information available in a variety of formats leads to broader collaboration and access to improvements in software. SharePoint Server 2013 provides the new PowerPoint Automation Service (similar to the current Word Automation Service), which can automatically convert Microsoft PowerPoint® presentations into a variety of formats to promote a high degree of accessibility. Formats include converting from older Microsoft Office documents to newer Office documents, web pages, or PDFs.

Office Web Apps

Office Web Apps has evolved into a separate server product, Office Web Apps Server, that can serve multiple SharePoint farms for viewing and editing documents. In addition, a server or farm that runs Office Web Apps can be used to view files that are stored across data stores, including the following:

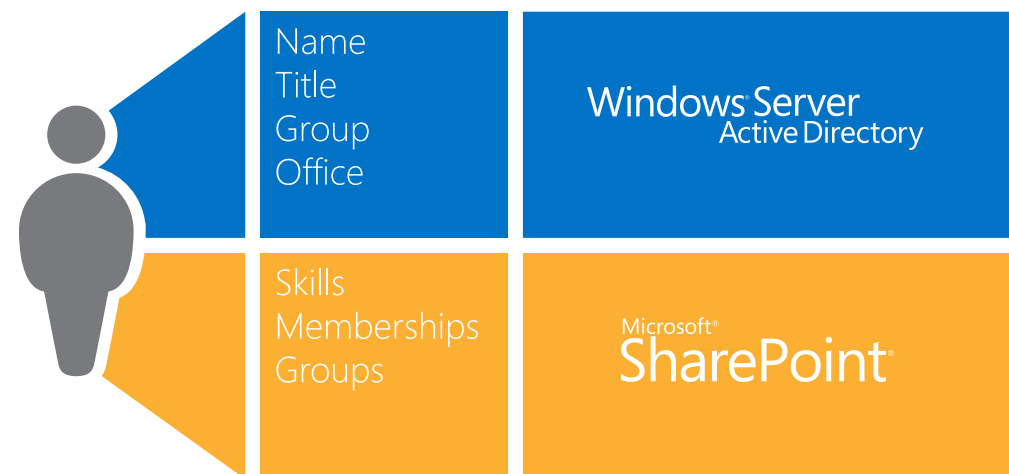
- Microsoft server products, especially SharePoint Server, Exchange Server, and Lync Server.
- File servers (URL accessible).

Third parties also can integrate with the service and provide access to documents in their stores, such as EMC Documentum, IBM FileNet, OpenText, and Oracle.

By separating Office Web Apps from the SharePoint farm, administrators can update servers more frequently, if desired. Administrators in large organizations can manage the scale and performance of Office Web Apps independent of the SharePoint environment. They also can serve multiple SharePoint farms, as well as Exchange Server and Lync Server, from one Office Web Apps Server environment.

User Profile Service

User profile properties drive a broad set of SharePoint features—from social collaboration to authorization. SharePoint Server 2013 simplifies access to user properties with new profile import options that range from a traditional Microsoft Forefront® Identity Manager-based approach, to new direct Active Directory® Domain Services synchronization, to choices for using an external identity manager. Overall, you should see significant improvements in performance while also having greater flexibility.



Scalable

SharePoint Server 2013 is designed to work how you work—providing scale and performance capabilities to grow with your business. SharePoint Server 2013 carries forward the solid architecture provided in SharePoint Server 2010, but also includes new capabilities designed to support the most demanding workloads.

Increase performance without raising cost.

Scalable Architecture

SharePoint Server 2013 encompasses a comprehensive solution that addresses a number of business and IT issues, but organizations do not need to perform an extensive, full-scale deployment immediately to start realizing benefits. SharePoint Server 2013 was designed so that organizations can deploy on any tactical project where they see immediate value, and then broaden the deployment to address multiple horizontal or vertical scenarios at their own pace—with few incremental IT resources needed to enable a new set of capabilities.

Distributed Cache

Data-driven applications have become increasingly prevalent as data is consumed from more diverse sources, such as business applications, syndicated feeds, and social contexts. SharePoint Server 2013 includes a new Distributed Cache Service built on the reliability of Windows Server® AppFabric® Caching. Distributed caching helps to ensure that no request takes too long.

Disk I/O

With an increased need for larger quotas, storage costs remain a concern in many SharePoint environments, and there is generally very little room in IT budgets to multiply storage capacity by two, three, or even four times. In parallel, industry shifts and advancements have led to more high-capacity, low-cost commodity storage options. SharePoint Server 2013 can be deployed to a variety of storage architectures without sacrificing availability. Building on the performance improvements in SharePoint Server 2010, SharePoint Server 2013 delivers a significant reduction in disk input/output (I/O), lowering the bar for minimum disk performance. In addition, smoother I/O patterns reduce contention, making more storage options available to support a SharePoint Server 2013 infrastructure.

Shredded Storage

Shredded Storage is designed to reduce an organization's storage footprint, minimize bandwidth, and improve performance through a new file save algorithm that ensures all write costs for file update operations are proportional to the size of the change being made to the file (and not the size of the file itself). Shredded Storage enables the storage of incremental updates to files in SharePoint Server by breaking a file into pieces and storing those pieces in Microsoft SQL Server®.

Minimal Download

SharePoint Server 2013 provides a rich, intuitive browsing experience. Minimal Download in SharePoint Server 2013 provides a new navigation framework that significantly improves page load performance and makes SharePoint Server feel more like a rich application. Minimal Download is designed to ensure a user only receives the difference between the source and destination page, minimizing bandwidth and improving overall performance.

To determine what content requires updates, Minimal Download implements a download manager interface between controls and content placeholders on the page and server. Developers can take advantage of Minimal Download by implementing controls and master pages that support the framework. Where controls do not support Minimal Download, the request reverts to a classic fully rendered page, ensuring pages are always available.

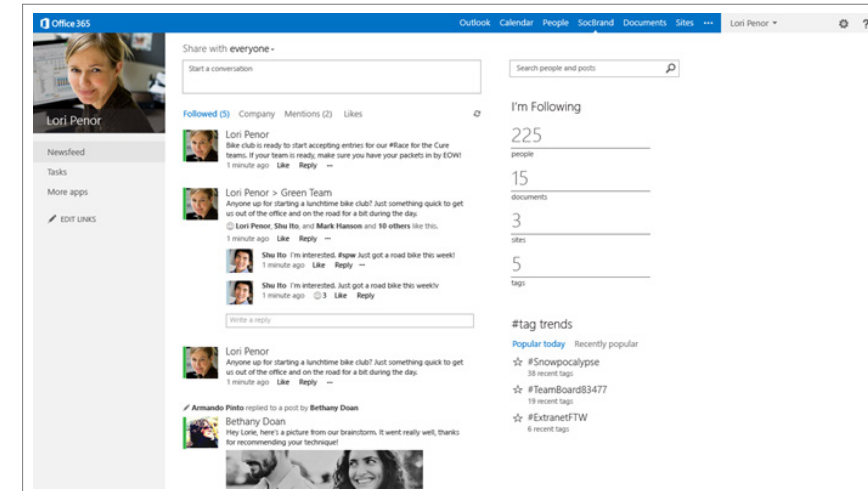
Data Platform

Scale and performance improvements are evident across SharePoint Server 2013, with depth that extends to the database layer. Database improvements in SharePoint Server 2013 take advantage of enhancements and capabilities through SQL Server 2008 R2 SP1, including:

- Conforming to Microsoft SQL Azure™ compliance criteria.
- Removing redundant and unused tables and indices to track links.
- Reducing I/O operations while browsing document libraries.
- Using SQL sparse columns to simplify SharePoint database schema and optimize data access.
- Improving large list dependencies.

Social Computing

Social computing and collaboration enable people to work in ways that are familiar to them, but as social computing becomes more pervasive, more demand is put on the supporting infrastructure. To keep up with these demands, social computing data is now stored in the content database where personal sites are hosted, providing a method to scale horizontally in parallel with demand.



Personal site in SharePoint Sever 2013

Complying with regulatory standards and protecting business-critical and personal data from leakage continue to be a priority for organizations and corporate IT. A key requirement for compliance and data protection is the ability to:

- Control who has access to information.
- Report on who actually accessed specific information.

SharePoint Server 2013 helps provide enhanced data security and compliance by offering simplified configuration and administration for regulatory policies. SharePoint Server 2013 puts IT professionals in a better position to control access to company- and customer-sensitive data by making authorization and audit management more central, flexible, and natural.

Secure

Securing information is critical to protecting your organization's competitive advantage. SharePoint Server 2013 provides a rich security model that both simplifies how information is shared and helps to ensure its security and compliance with corporate policies.

Find the perfect balance
between compliance and
collaboration.

Information Management

SharePoint Server 2013 extends compliance beyond just content. Improvements in Information Management Policies are designed to provide balance between enabling user self-service and ensuring content adheres to corporate policy: IT professionals can define corporate-wide Information Management Policies and apply them to site collections as they are created.

Moreover, built-in policies help protect confidential information with intuitive changes to the user experience that better support governance across information architecture. Likewise, these policies help ensure compliance and increase manageability related to auditing with audit resilience, filtering, user-defined audit, and enablement across all SharePoint editions.

Electronic Discovery

In any organization, as the volume of information created continues to increase, the need to systematically preserve and discover this information becomes critical. Whether your motivation is to improve storage management, meet regulatory requirements for data retention, or lower the cost of satisfying electronic discovery (eDiscovery) requests, information archiving can offer a number of benefits.

SharePoint Server 2013 introduces integrated information archiving, retention, and discovery capabilities that help simplify and automate the process of protecting and preserving business communications. These built-in tools can help you preserve and discover information without having to change the way your users or administrators work with and manage SharePoint products.

Rights Management

SharePoint Server 2013 includes broad support for Information Rights Management (IRM) to control who reads or copies information, no matter where it is stored. Unlike firewalls, encrypted delivery, and other security methods, IRM provides persistent protection that remains with the information even after it leaves your corporate network.

Secure Delegation

Delegate permissions, whether server-to-server or application authorization, using new OAuth 2.0 support in SharePoint Server 2013. OAuth serves as a valet key that enables simple “act on behalf of permissions,” and is designed to provide the trusted security needed to ensure your information is safe.



Site Closure and Deletion

While data retention is crucial, it’s also important to be able to reduce the amount of archived data stored in SharePoint Server—whether you are seeking to maintain version control, adhere to your information architecture, or reduce storage use. Site Closure and Deletion follows the policies established by IT and allows users to close and remove sites that are no longer needed. When a site is closed, it is trimmed from places that aggregate open sites to site members, such as Microsoft Outlook®, Outlook Web App, and Microsoft Project Server.

iFrame Security

An iFrame is an inline frame commonly used to embed another document with the current HTML document. iFrames provide a quick and simple method to view content that resides on other pages in SharePoint Server or expose content from other sources within and outside the firewall. While providing an efficient method to render information, iFrames increasingly have become another attack vector for hackers, either for injection-oriented attacks or malicious content delivery. SharePoint Server 2013 recognizes this threat and provides new functionality to tighten security on iFrames: IT and site collection administrators now can specify contributors’ rights to insert iFrames in pages (using a list of acceptable domains, if necessary).

Reliable

SharePoint Server 2013 provides unparalleled levels of availability and site resilience, while also reducing the cost and complexity of deployment to environments of diverse sizes. Building on the native capabilities introduced in SharePoint Server 2010, improvements in SharePoint Server 2013 provide a simplified, unified solution for high availability, disaster recovery, and backup.

Always ready.

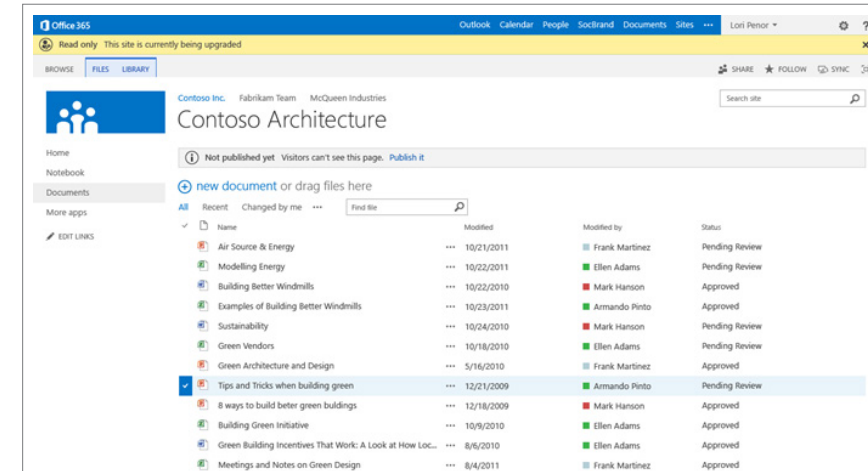
Request Management

Request Management in SharePoint Server 2013 enables IT to prioritize and route incoming requests through a rules engine that applies logic to determine the nature of the request and the appropriate response. Request Management can be used to:

- Route requests to servers with good health characteristics based on a new weighting schema.
- Identify and block known bad requests such as web robot.
- Prioritize requests by throttling lower priority requests to preserve resources for those of higher priority.
- Route specific request types to other servers, either within or outside of the farm handling the request.

System Status Notifications

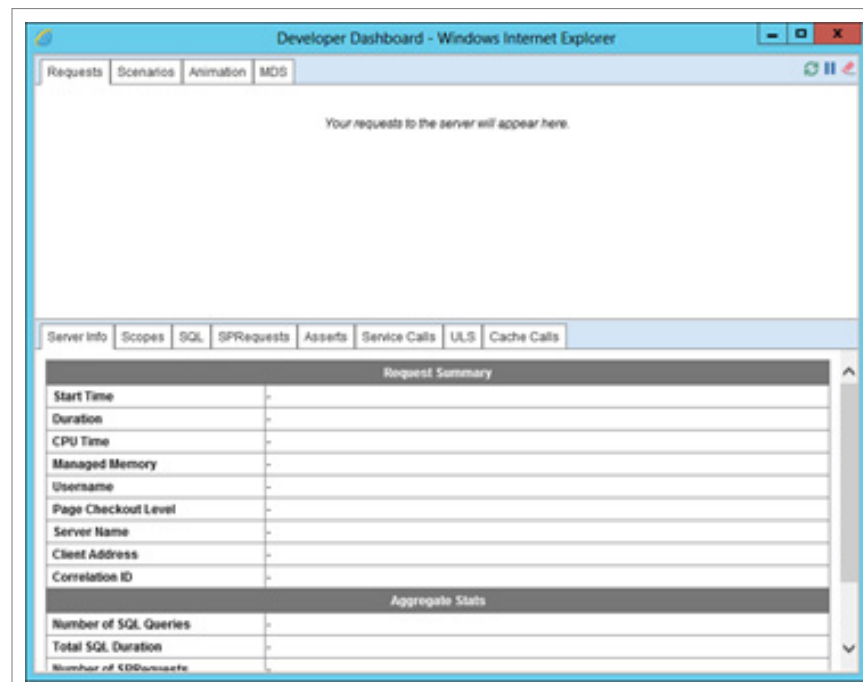
System Status Notifications present important information about a SharePoint deployment and its availability, whether during upgrades, routine maintenance, or conversion to read-only. Users are kept “in the know” as they receive a prominent banner on their sites that provides insight into the activity being performed—helping reduce calls to the help desk and subsequent burden on IT.



System Status Notification banner showing the upgrade status of a team site

Developer Dashboard

A completely redesigned Developer Dashboard makes important information about performance and reliability readily available. The Developer Dashboard aggregates details about individual requests and surfaces them in a new unified view. It also provides an improved structured view of request details through a revised user experience. This information, presented right on the page, can be invaluable for administrators working to troubleshoot performance issues, as well as developers working to debug and optimize their code. The Developer Dashboard is disabled by default and can be enabled for each web application independently by using the Windows PowerShell® command-line interface.



Developer Dashboard in SharePoint Server 2013

SQL Server 2012

Microsoft SQL Server 2012 is a cloud-ready information platform that helps organizations unlock breakthrough insights and quickly build solutions to extend data across on-premises and public cloud environments—all backed by mission-critical confidence.

Learn more about SQL Server 2012 at <http://www.microsoft.com/sqlserver/en/us/product-info/overview-capabilities.aspx>.

Windows Server 2012

Windows Server powers many of the world's largest data centers, enables small businesses around the globe, and delivers value to organizations of all sizes in between. Building on this legacy, Windows Server 2012 redefines the category, delivering hundreds of new features and enhancements that span virtualization, networking, storage, user experience, cloud computing, automation, and more. Simply put, Windows Server 2012 helps you transform your IT operations to reduce costs and deliver a whole new level of business value.

Learn more about Windows Server 2012 at <http://www.microsoft.com/en-us/server-cloud/windows-server/2012-default.aspx>.

Manage Your Time

In an ever-competitive business climate, you need to be able to keep up with emerging trends and respond appropriately. SharePoint Server 2013 provides solutions that enable IT to take action rapidly.

One of the more difficult challenges beyond deploying software is managing the IT infrastructure to support it. In many cases, IT investment directly impacts the bottom line. SharePoint Server 2013 has been designed to reduce the emphasis on IT and streamline administrative tasks, so IT professionals can concentrate on core competencies and mitigate costs, even against a backdrop of time pressures and limited technical skills. Tasks that may have taken hours to complete in the past have become simple, efficient, and effective processes that allow IT to focus less on day-to-day management and more on innovation.

Cost-Effective

Across organizations, IT is being asked to do more every day—and with ever-shrinking budgets. Many of the advancements in SharePoint Server 2013 that make common tasks more efficient also make IT more productive. Performance and reliability improvements mean that SharePoint Server 2013 is ready when users are, while UI enhancements make everyday tasks faster and easier.

Empower end users while managing risk, complexity, and cost.

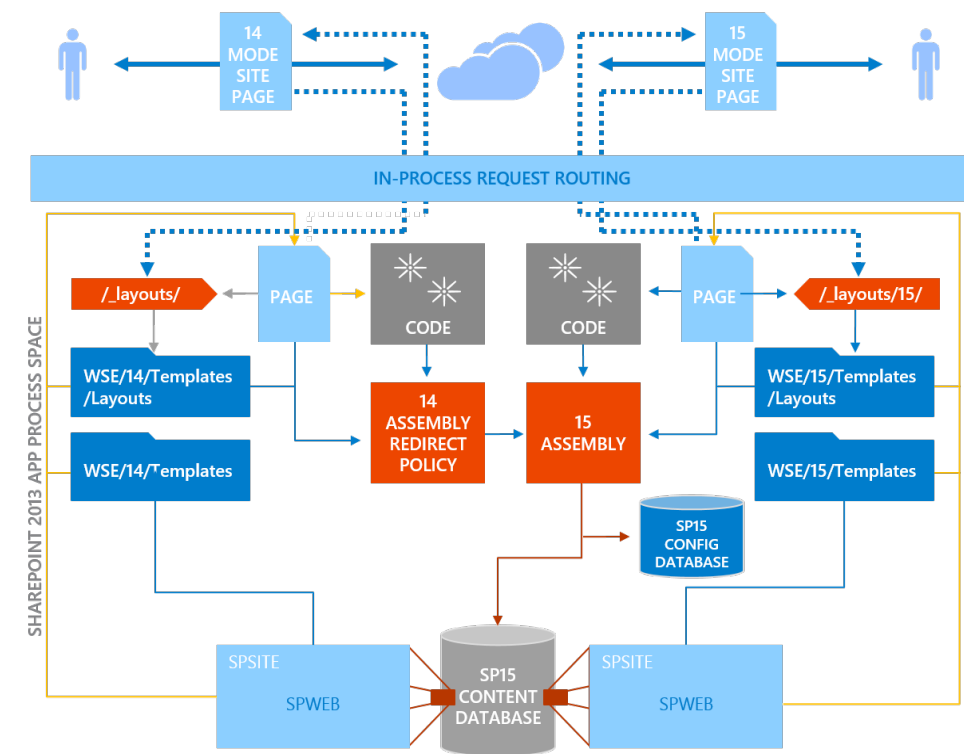
Deferred Upgrade

A completely revised, backward-compatible upgrade experience is designed to balance the needs of users with those of IT. Because changing software is often difficult, SharePoint Server 2013 enables IT to upgrade SharePoint Server 2010 without having to upgrade users' sites and content. These upgrades are deferred

to the users, allowing them to choose when the time is right. New evaluation site collections allow users to request an evaluation of the upgrade prior to upgrading production content; if satisfied with the experience, site collection administrators then can upgrade their content. It's important to note that whether you have deployed SharePoint Server 2010 on-premises or subscribe to SharePoint Online in Office 365, the full upgrade capability is available.

Site Collection Health Checks

As another part of the upgrade experience, users have access to Site Collection Health Checks, which can be run prior to or during the site collection upgrade process to detect issues and provide solutions for resolving them. Guidance is available every step of the way to help to ensure a successful upgrade. Even after an upgrade has been completed successfully, Site Collection Health Checks remain available to help ensure the reliability and accessibility of site collections throughout their life cycle.



Site collection provisioning modes in SharePoint Server 2013

Selective Provisioning

To minimize the impact on users of upgrading to a new version of software, SharePoint Server 2013 supports new site collection provisioning modes. This means you can choose which version of SharePoint Server a site collection should be provisioned in when it is created. For example, you can elect that any new site collections created in a SharePoint Server 2013 environment are provisioned only in backward-compatible SharePoint Server 2010 mode or in SharePoint Server 2013 mode. Optionally, you also can allow users to choose which version is most appropriate for their individual and business needs.

In addition, page rendering coexistence helps ensure your customizations will continue to work. Site collections and sites provisioned in SharePoint Server 2013 using SharePoint Server 2010 mode both look and function like a SharePoint Server 2010 site.

Save time and lower
operational costs.

Windows PowerShell

SharePoint Server 2013 includes native support for Windows PowerShell 3.0 to help IT get more done in less time. Windows PowerShell 3.0 provides a comprehensive management platform for all aspects of the data center: servers, network, and storage. In this newest version of Windows PowerShell, sessions to remote servers are more resilient and can withstand various types of interruptions.

Learning Windows PowerShell is easier because of simplified, consistent syntax that resembles natural language. New Windows PowerShell commands are comprehensive and support the diverse tasks required at a data center, so IT professionals can automate basic and complex data center tasks with ease.

Central Administration

SharePoint Server 2013 provides a consistent administrative interface that is extensible and accessible remotely. Shared services enable IT management to simplify and delegate administration, helping to maximize the skills and availability of IT resources.

In addition to empowering users outside of IT, the role-based administration model can be used to divide and delegate responsibilities within an IT organization. Specialized roles for search or Term Store specialists, help desk staff, or other administrators are easy to create and manage.

SharePoint Online

Office 365 sites powered by SharePoint Online provide the core features of SharePoint Server 2013, so people receive the business-class collaboration capabilities they need to be productive. With anywhere access to their information and a consistent experience across personal computers, the web, and mobile devices, users can get more done wherever they are and wherever they go.

In addition to delivering powerful and familiar SharePoint capabilities, SharePoint Online greatly simplifies management. You can administer an online environment from anywhere using an easy web interface or, for more complex or bulk operations, Windows PowerShell. Directory Synchronization from local Active Directory Domain Services to Microsoft Online Services enables you to use the information from the on-premises directory so you do not have to perform administration in two places. Support for your IT staff is available 24 hours a day, 7 days a week.

SharePoint Online can be used as an extension to your on-premises SharePoint deployment by providing a cost-effective way to shift workloads to the cloud.

SharePoint Online also provides advanced security and reliability features to help your data remain safe in the cloud. The service is hosted out of redundant, geographically distributed data centers and includes a premium disaster recovery service. Microsoft Forefront Protection for SharePoint is built into the service to help keep viruses from reaching your users.

SharePoint Online is updated regularly with new features and capabilities, so your organization gets the latest technology without having to update, patch, or upgrade servers. This means you can offer these enhancements to users without investing time and resources to upgrade infrastructure.

Efficient

With easier use and tighter integration, SharePoint Server 2013 simplifies end-user training and support for IT. Data from multiple enterprise systems is integrated through a consistent presentation layer that puts significant customization capabilities within easy reach of non-technical users. Individuals and business units can create and deploy their own solutions and applications for collaborative processes. They also can build simple workflow tools to automate tasks specific to their unique needs and preferences without incurring the costs of custom development. Likewise, IT can deploy its resources more effectively while the organization realizes greater value from both people and systems.

Make everyday tasks faster
and easier.

Multiple Screens

In today's connected world, responding to the consumerization of IT can be challenging. With a proliferation of devices across the organization, you need to be sure your software will support users' preferred equipment. SharePoint Server 2013, with deep investment in HTML5, provides IT professionals and designers with capabilities that enable device-specific targeting of content. This helps ensure that users have access to the information they need, regardless of the screen they choose to access it on.

SharePoint Server 2013 further empowers your workforce by delivering a consistent experience across screens, whether using a browser on the desktop, a mobile device, or a tablet or slate. Through this rich experience, users can easily transition from one client to another without having to sacrifice feature fidelity.

Mobile

Making decisions faster and keeping in contact are critical capabilities for increasing effectiveness in any organization. Users' ability to access information while on the go is now a workplace necessity. In addition to a consistent cross-screen experience, SharePoint Server 2013 provides the latest technologies and standards for mobile push and information synchronization.

Open Data Protocol

The amount of information created and stored within applications has grown exponentially. However, that data is often limited to a specific application, resulting in data silos. SharePoint Server 2013 provides a more secure and consistent method for accessing and presenting external data through services such as Excel Services, Business Connectivity Services, and PerformancePoint Services. New support for the Open Data Protocol (OData) also allows people to take information outside of application boundaries, providing integration and interoperability across a broad range of clients, servers, and services.

Business Connectivity Services

The information that lives outside of SharePoint Server boundaries has become as important as the information that lives within them. Users no longer create data in isolation: They compile, aggregate, and surface it. As external data has become ubiquitous, SharePoint Server 2013 introduces improvements across its business connectivity architecture to make working with data outside of SharePoint Server more transparent.

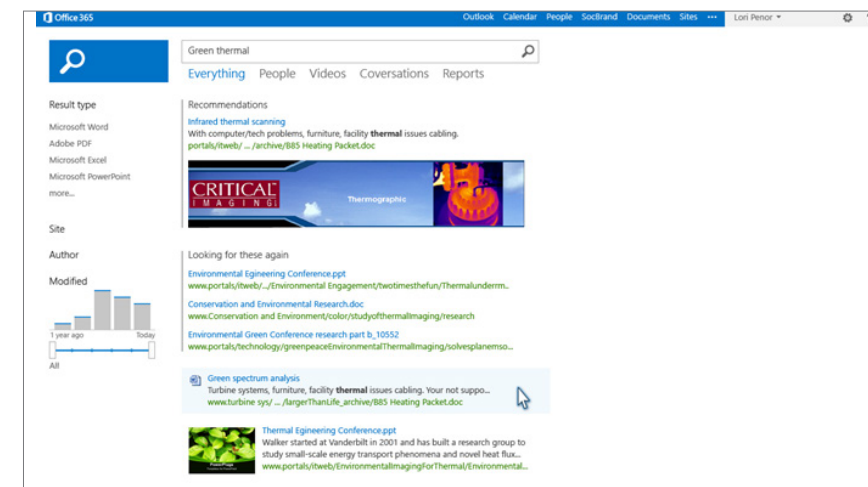
Business Connectivity Services enables more secure and efficient read/write access to a variety of external data. This is done through a comprehensive framework that provides standard user and programming interfaces. Further, you can create a wide range of business solutions—both no-code SharePoint Composite solutions for simple-to-intermediate activities and code-based solutions for advanced needs.

SharePoint Server 2013 significantly improves the ability of Business Connectivity Services to alleviate bottlenecks by offloading data retrieval, paging, filtering, and sorting to the external data source. This reduces memory and processing pressure on SharePoint Server, improving display, refresh, and data operations for users—whether through the browser with SharePoint Server or through the client with Microsoft Office products.

Search

In SharePoint Server 2013, search is better integrated with enterprise infrastructure, based on an entirely new engine that combines the simplicity and out-of-box relevance provided by SharePoint Search with the massive scale and extensibility offered by Microsoft FAST™ Search Server. IT can deploy a scalable search architecture that allows users to search remote data sources, navigate enterprise repositories, and bring more data within reach through new individual search results based on how people interact with information in their daily work.

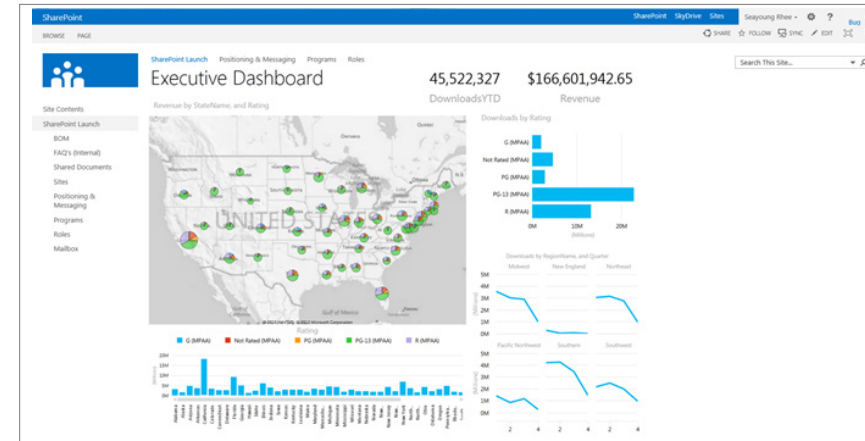
SharePoint Server 2013 also extends traditional data search capabilities into a true knowledge search by including the expertise of people. Best practices can be disseminated rapidly because people can contribute knowledge easily through blogs, wikis, personalized sites, and communities of practice. This tacit knowledge then becomes discoverable through search, so it can be reused for business value.



Expanded search options in SharePoint Server 2013

Business Intelligence

With SharePoint Server 2013, organizations can derive greater value from their investments in data warehouse and business intelligence (BI) and analytics systems. Self-service BI makes the insights from enterprise data more broadly and easily accessible across the entire organization. Users can build query and visualization tools and scorecards and expose enterprise data with dashboards. SharePoint Server 2013 BI enhancements include beautiful visualizations through Power View reports, improvements across Excel Services for exploring data, and tighter security and control for managing BI assets with new compliance tools. All of these capabilities are supported across devices and platforms, both on-premises and in the cloud.



Self-service BI in SharePoint Server 2013

Business Intelligence Center

A new, streamlined Business Intelligence Center site template is available to help manage reports, scorecards, dashboards, and data sources in a central location. Users can access Excel Services to publish reports, as well as PerformancePoint Services to create scorecards and dashboards.

Excel Services

Excel Services provides users with a rich experience and new capabilities when working with web-based workbooks.

- Power View now empowers users to visually explore data, quickly create interactive visualizations, and easily present and share reports—all with the familiarity of Microsoft Excel®.
- Users have the ability to mash-up and analyze data from virtually any source and rapidly create compelling analytical applications using PowerPivot in Excel and publishing to SharePoint Server.
- New data navigation features make it easier to drill into data displayed in Excel Services reports and dashboards.
- Timeline controls render in a browser window similarly to those in the Microsoft Excel client.
- Context menus in a browser window resemble right-click menus in the Excel client.
- In a browser window, users can add, change, and remove items from rows, columns, values, and filters in PivotChart and PivotTable reports.
- With Excel Services, users can publish workbooks that contain calculated measures and members.

These capabilities can help your organization achieve better business outcomes by increasing the effectiveness and efficiency of users, while reducing IT cost and complexity. Plus, because the IT department maintains control over security and policies, these benefits can be attained in a highly secure manner.

PerformancePoint Services

PerformancePoint Services provides a new level of transparent dashboards, complete with a fresh look and feel and capabilities such as searching items within filters, using custom background images, and support for moving entire dashboards to other locations in SharePoint Server. For example, executives and business users can monitor and discuss information through collaborative BI Dashboards, enabling them to make better decisions using scorecards and social features. Other key capabilities of PerformancePoint Services include the following:

- Users can create integrated dashboards that bind important reports and scorecards customized for monitoring progress.
- Insights can be socialized to encourage collaboration using features such as recommending reports and authors, tagging favorite documents and libraries, and starting discussions on micro blogs and personal sites.
- SharePoint Enterprise Search enables users to instantly find trusted reports and expose popular assets.

Conclusion

SharePoint Server 2013 provides a comprehensive solution for connected information, enabling people to transform the way they work while preserving the advantages of structured processes, compliance, and existing IT investments.

SharePoint Server 2013 has been optimized for the way people work, providing them with a familiar, consistent view of information, collaboration, and process. At the same time, IT benefits from a comprehensive, easily managed and integrated platform that meets the needs of the business.

With SharePoint Server 2013 providing the foundation for a commitment to optimizing the way people work, organizations can more fully mobilize the talent of users and systems to drive high-value relationships, rapid innovation, and operational excellence.

For more information, go to <http://sharepoint.microsoft.com>.

Resources

Learn more about what's new in SharePoint Server 2013 at <http://technet.microsoft.com/sharepoint/fp142366>.

Learn about what's new for IT professionals in SharePoint Server 2013 at [http://technet.microsoft.com/library/cc261970\(v=office.15\)](http://technet.microsoft.com/library/cc261970(v=office.15)).